

North Campus Development & Parking

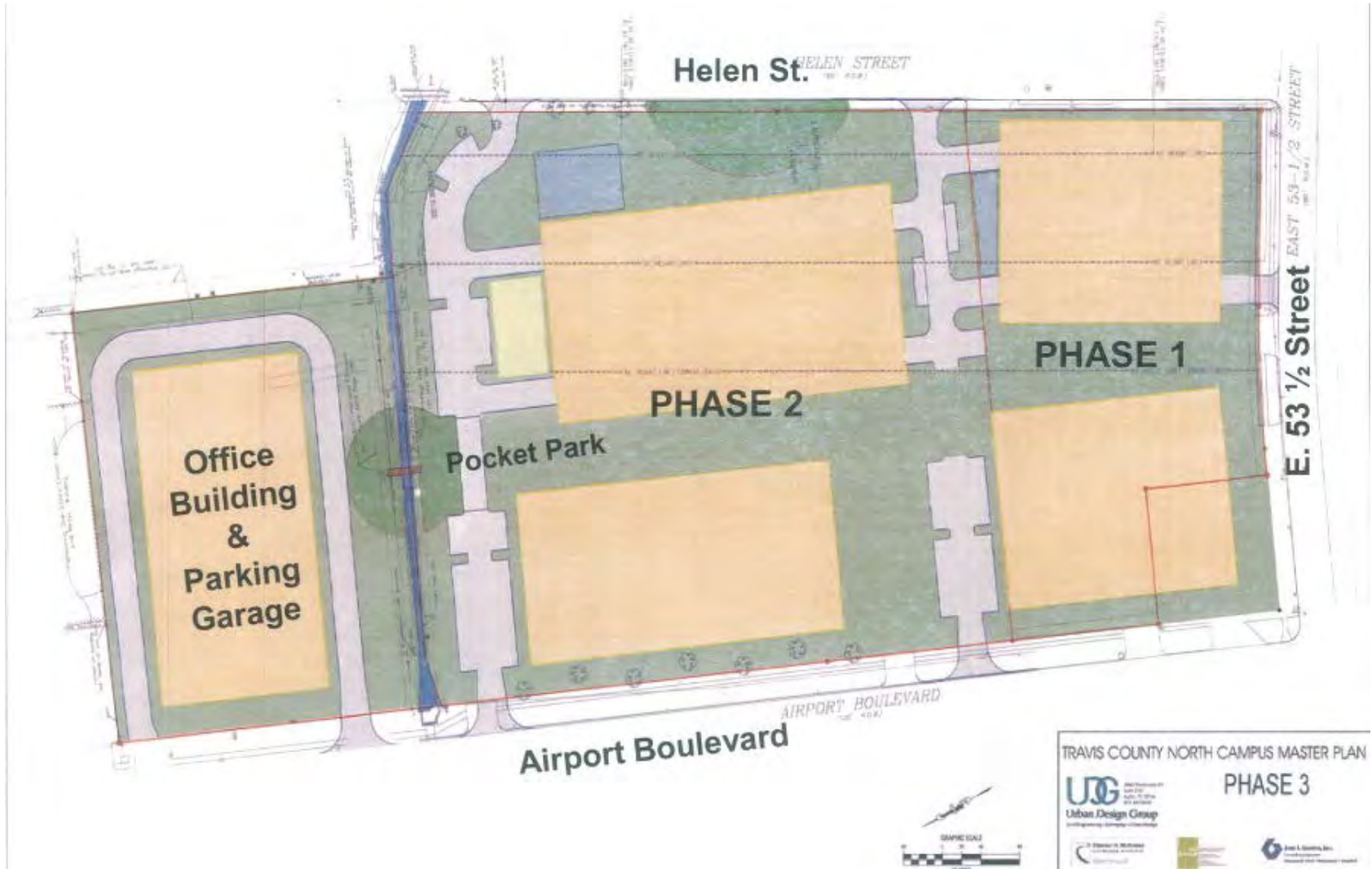
County Clerk Training Room

October 3, 2018

Agenda

- North Campus Master Plan
- Current and future North Campus parking availability
- Parking plan during construction
- Employee input and feedback: history and opportunities
- Next steps

North Campus Master Plan Final Phase



New Development



New Development



Current Parking Inventory



Parking Inventory: Phase 1



Interim Parking and Shuttle Plan

- Parking lot lease at 6301 E US290
- Shuttle from parking lot to North Campus
- Optional stop at Highland Station for Red Line passengers
- FMD-provided security



Offsite Parking Lot

- 133 spaces
- In front of former Virginia College building and adjacent to US290 frontage road: ideal for security and quick drop-off/pickup



During Construction: North Campus Parking Zones



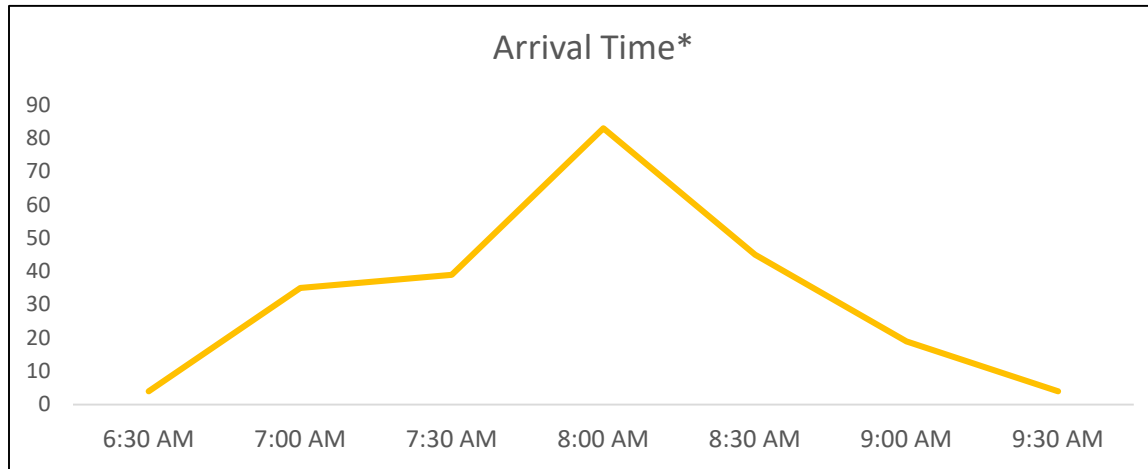
Shuttle Operations

- Continuous loop (every 15 minutes or better)
 - Morning peak hours 6:30-8:30 am
 - Afternoon peak hours 4:15-6:15 pm
- Less frequent service
 - All hours between 8:30 am and 4:15 pm
- Parking lot and shuttle availability begin December 1 (construction starts December 15)

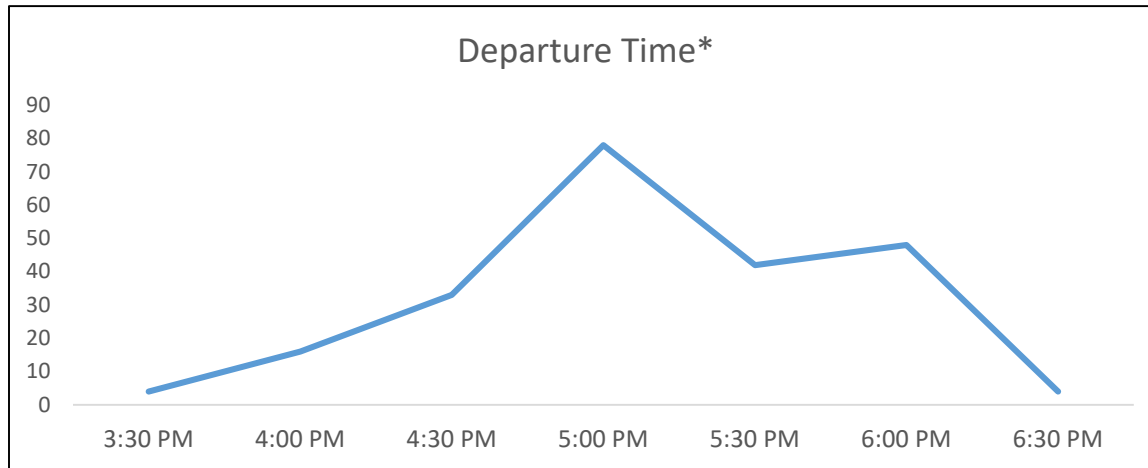
Offsite Parking

- Management will determine eligibility for on-site parking, off-site parking, telework, flex schedules, or other options for employees
- 102 spots at 5501 Airport to be managed by departments
- Suggestions for eligibility based on employee needs, work times, etc. have been provided to management

5501 Employee Time Data



*County Clerk, Tax Office, and CES employee data



Employee Input and Feedback to Date

- PBO regular updates to North Campus Security Team Meeting
- Location preference survey – secured parking contract with second highest ranked option out of four
- In response to employees' security-related questions, FMD and PBO worked together to plan for additional security
- Q&A from 5501 tenants available upon request

Future Opportunities for Feedback

ncprojects@traviscountytexas.gov

FMD Security: 512-854-5555

Pre-launch meeting(s) with shuttle
provider

Next Steps

- Shuttle provider pre-launch meeting(s) in November
- Offsite parking available December 1
- Construction starts December 15
- Parking website will include project updates and shuttle information
- Managers will receive and distribute project update emails

Questions?

