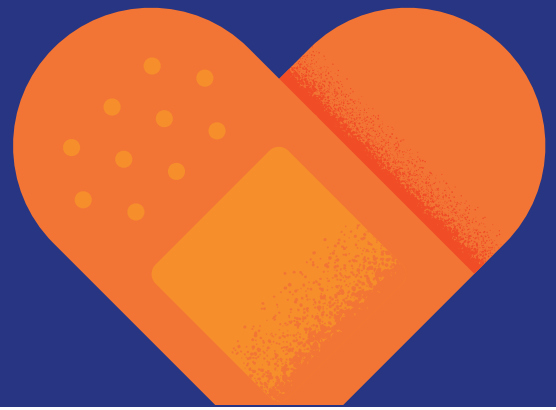


Get Your Flu Shot at a Travis County Onsite Event



Registration is NOW OPEN

GRANGER BUILDING: 1st Floor Conference Room
314 West 11th St.

Wednesday, Oct. 9th, 9 AM to 1:30 PM

GARDNER BETTS JUVENILE: 2nd Floor Conference Room
2515 S. Congress Ave.

Tuesday, Oct. 15th, 8 AM to 12:30 PM

CIVIL AND FAMILY COURTS FACILITY (CFCF): 2nd Floor, Law Library
1700 Guadalupe St.

Wednesday, Oct. 16th, 9 AM to 2 PM

TRAVIS COUNTY ADMIN OFFICE: Multifunction Room B
700 Lavaca St.

Thursday, Oct. 17th, 9 AM to 2 PM

AIRPORT BLVD. BUILDING: Counseling & Education, Room 114
5501 Airport Blvd., (North Entrance)

Tuesday, Oct. 22nd, 9 AM to 1:30 PM

EAST SERVICE CENTER: Town Hall
6011 Blue Bluff Rd.

Thursday, Oct. 24th, 10 AM to 12:30 PM

NELDA WELLS SPEARS BUILDING: 2nd Floor Conference Room 253
2433 Ridgepoint Dr.

Tuesday, Oct. 29th, 11 AM to 1:30 PM

RONALD EARLE BUILDING: Main Lobby, 1st Floor
416 West 11th St

Wednesday, Oct. 30th, 9 AM to 3:30 PM

WEST SERVICE CENTER: Town Hall
4501 FM 620 N.

Thursday, Oct. 31st, 1 PM to 3:30 PM

Questions?

Contact: CAREprogram@traviscountytx.gov or call 512-539-6374 to speak with your Travis County UHC Health Coach, Frances Diep



Register Online

Visit letsgetchecked.com/traviscounty and select **Get Started**. You will need the verification code: **TCOUNTY2024** and your **UHC Member ID***.

Employees, spouses and dependents (age 18+) who are on the Travis County UnitedHealthcare Medical Plan are eligible to participate.

*Employees will use their Member ID when registering. Spouses/dependents will use their Member ID and add digits at the end based on the order that the member appears on the Medical ID card. Add 01 at the end if they are listed as the first dependent/spouse, add 02 if they are listed as the second dependent, add 03 if they are listed as the third dependent, etc. See sample Medical ID card below:

United Healthcare		Optum Rx [®]	
Member: EmployeeSmith	Member ID: 999999999	Group Number: 701254	Travis County Choice Plus Plan
Dependents: SmithSpouse/ChildA SmithChildB	Registration Instructions: Member: EmployeeSmith: Use Member ID (999999999) SmithSpouse/ChildA: Use Member ID + 01 (99999999901) SmithChildB: Use Member ID + 02 (99999999902)		
Copays: Office: \$30 UrgCare: \$45	ER: \$300 Spec: \$45	DED INDFAM \$700/\$1750 \$2000/\$5000	Administered by United HealthCare Services, Inc.
0508			

Can't attend an event?

Get your flu shot at your doctor's office or other network provider, such as a retail convenience care clinic. Your flu shot is covered at 100% from participating providers. To find a participating flu shot provider near you, visit uhc.com/flu.

